

Comparative Study

Jordan Loontjens

My Comparative study is focusing on different artist and pieces of their artwork. The artist Salvador Dali and Ed Ruscha are shown within my works as inspiration for my pieces. The methods of these two artists I picked have similarities with their choice of color and purpose and differences with their technique and art movement within their piece. Examples like time period, art style, and visual concept. I also be critiquing their meanings and significance between their pieces.

Evaluation of Cultural Significance of Ed Ruscha

Ed Ruscha was born on December 16, 1937 in Omaha, Nebraska. Ed Ruscha was a photographer and a painter. His photography would only last him in his early career and would continue to pursue painting. He would paint for his entire career after he was interested in graphic arts, in 1957, Ed Ruscha was inspired by *"Target With Four Faces"* an magazine by Jasper Johns an American artist that used abstract expressionism, Neo-Dada, and Pop art.

Ed Ruscha was a Pop and Conceptual artist, influenced by Surrealism, and Dada. In his beginning fame he was labeled as a Pop or Conceptual artist due to his pieces capturing ordinary objects and people of everyday life, but Ruscha opposed himself as being one. Ruscha had an affection for typography, everyday topics and events remained a critical source of inspiration for Ruscha, and the impact can be seen throughout all his pieces. Ruscha used words and phrases within many of his paintings. 'I like the idea of a word becoming a picture, almost leaving its body, then coming back and becoming a word again,' Ruscha once said. 'I see myself working with two things that don't even ask to understand each other.' His word paintings are portrayed as not pictures of words but rather words regarded as visual develops. His quote is saying he takes two things that don't normally go together and combines them into one.

Interpretation of Function and Purpose:

Annotation of "Faucet" by Ed Ruscha

The silhouette of this faucet in contrast with the background creates space and makes the faucet capture importance and show purpose of how much work is made to make water flow out of every faucet and how the background is a blur in this piece because the main focus is the faucet

The blue stream coming from the faucet attracts the viewer's attention to the center of the piece with a bright blue color.



(2)

The symmetrical horizontal line of white circles makes the piece seem like it is around a bright room.

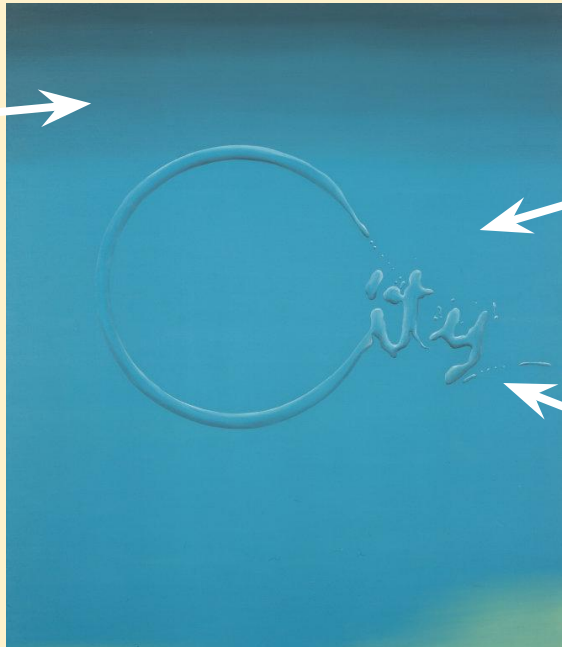
This background is an interpretation of Summer and uses warm colors to depict this, and the water is what keeps the summer fun, safe, clean, and comfortable.

This painting seems to have a watercolor texture looking light and airy.

Interpretation of Function and Purpose:

Annotation of "City" by Ed Ruscha

The purpose of the blended textures of blue with a dark to light gradient purpose and function was to give the illusion of the words "City" to be three dimensional and coming out of the piece. The water like illusion gives it a solemn vibe and tone towards this piece.



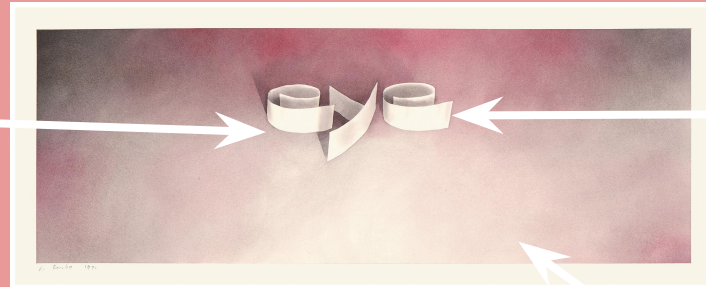
The faded background of blue contrasts with the word "City" in the center foreground of this piece. The texture of the shading done to the word "City" in the center function makes the word stand out and show that it is the main component within Ruscha's piece.

The purpose behind this piece is how cities are always flowing and moving similar to how water is always flowing and swaying from the breeze hitting it.

Interpretation of Function and Purpose:

Annotation of "Eye" by Ed Ruscha 1971

The function of the font of this word give the word a unique meaning with emotions of from the style of the letters portrayed within this piece. The font has a graceful, whimsical feel to them. with an elegant silky texture resembling cloth from a women's dress.



(4)

"I like the idea of a word becoming a picture, almost leaving its body, then coming back and becoming a word again". *Ed Ruscha (1)*

The word connects the viewer with a feeling and memory relating to the word displayed. The three dimensional word depicts an reason that resonates with it without showing the emotion physically only the word that relates towards it.

The background functions as a more gloomy and dark setting where the word lies making the word resemble more personal and sorrow emotions.

Analysis of Formal Qualities of Ed Ruscha

Ed Ruscha focuses on color, texture, and space to create pieces of everyday objects and landscapes. He uses these art elements to change the meaning and significance of ordinary everyday objects and ideas.

In Ed Ruscha's piece "City" he creates a whole new meaning for this and how one views the word city within his representation of it. that he painted using his technique of making three dimensional words and making conceptual art out of them was a unique type of art Ed Ruscha was known for. By him painting "City" he has given it a definition that gives the image of it being more than a word within his piece. The way Ruscha can alter one's perspective based on a texture and color scheme using a word is an amazing way of art and using that quality to portray emotions through this style.

How much effort goes into making a faucet have a functional and useful purpose more than many can even imagine. Ruscha expresses the sense in which this faucet is emphasized by the blurred background and shadowing of a desert, giving it the idea of it being in a vast area like a desert. It's a paradox, he contradicts himself with the desert like background but with running water from a faucet

Like in many of Ruscha's pieces he has something stand out within the piece giving it significance. Catching the viewer's eye as it becomes the center of attention within the piece. In Ruscha's piece "Eye" he captures the word eye and gives it a deeper meaning than just being a body part. He used typography within many of his pieces to create emotion from words and phrases. In this piece "Eye" and many others he used many mediums like gunpowder, blood, condiments, and food to create them using ordinary objects to create his art rather than paint.



Evaluation of Cultural Significance of Salvador Dalí

The background of the slide is a reproduction of Salvador Dalí's famous painting 'The Persistence of Memory'. It features a landscape with a small building on a hill, a large pocket watch melting over a table, and a figure with a distorted face. The overall color palette is dominated by warm, reddish-orange tones.

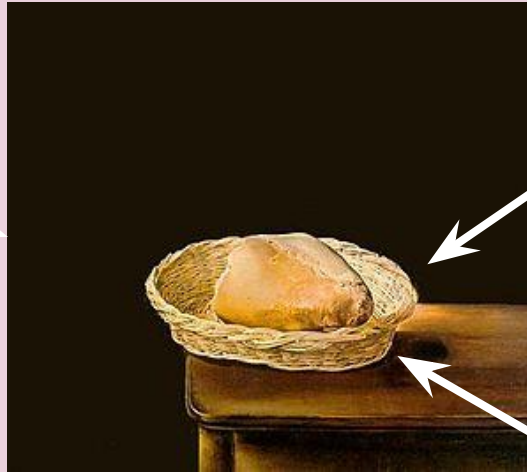
Salvador Dalí was born on May 11, 1904, in Figueres, Spain. Salvador Dalí was a Spanish painter in the 20th century. Throughout his career, he encountered a wide range of works of art movements like Dada, Cubism, and Impressionism, and tried different things with a couple of styles, enabling him to encourage his purposes of articulation, and the plan pieces which he made amid the celebrated and broad profession that he had.

A vast majority of Salvador Dalí works demonstrate a kind of dreamland which he regularly draws hallucinatory characters. Salvador Dalí has so much real commitment to the Surrealist development to where he evolved the movement with the "Paranoiac-Critical Method" which is a type of mental exercise of getting to the subliminal parts of the brain to have a creative motivation. Salvador Dalí utilized this technique to understand the fantasies and creative energy have in his psyche, changing this present reality how he would have preferred and not really what it was. Dalí exemplified the possibility that life is the greatest form of art and he mined his with such persistent enthusiasm, immaculateness of mission and diehard sense of duty regarding investigating and sharpening his different advantages and specialties that it is difficult to disregard his historic effect he had on the art world.

Interpretation of Function and Purpose

Annotation of "*Basket of Bread*" by Salvador Dali 1945

The purpose of the bread in the basket is representing the importance of the little things in life and back in Dali's started painting in 1929 just right before the great depression. This piece was created in 1945 right during the Holocaust and is capture the struggle and poverty many went through during this time period. Dali is depicting the necessity for food for many during the time of this piece and how they cherish anything they could muster on a table through the rough time.



(6)

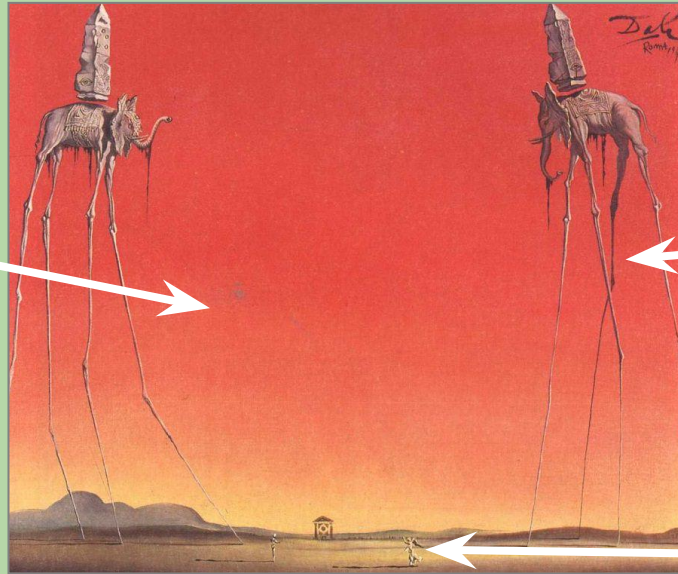
The background on this piece is a dark solid black contrasting the bright golden basket of bread being the main focus within this piece.

The bread emphasizes the struggle of survival and how important this bread was to many families for survival that many not in poverty would not appreciate this basket of bread as much.

Interpretation of Function and Purpose

Annotation of "Elephants" by Salvador Dali 1948

The function of the background is to give this piece a warm fuzzy feel towards the piece. The background uses warm colors in a gradient from red, orange, to yellow of a morning sunrise on a nice summer day.



The reason and purpose for the Long legs on the elephants could represent the weight of life in comparison to an elephant's weight beating many down making us feel hopeless and that can be interpreted by the frail skinny legs of the elephants

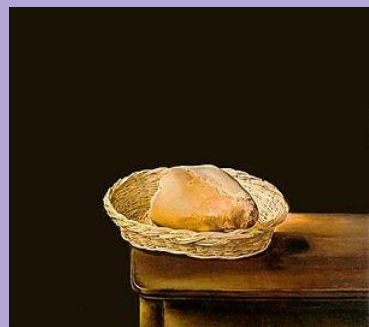
The purpose of the foreground and small human being is to show how small we feel towards how much control we have on our own lives.

Analysis of Formal Qualities of Salvador Dali

Dali uses meaning and space to depict conceptual meaning within his pieces. He uses art movement to show his viewpoints on historic events through contrast of background and foreground.

In Dali's piece "Elephants" he creates a lesson of life through the use of surrealism and space with the distance through perspective. By him emphasizing how overarching life is on us far from our reach and always above us directing us through all of life's struggles and problems.

In Dali's piece "Basket of Bread" he captures the struggles of life during the Holocaust through the emphasis of how scarce food was and how valuable it was for many during the rough time period that was the Holocaust. Dali's use of texture and contrast with the black background to give more importance to the basket of bread on the table. Dali's way of giving a significant meaning to a everyday food and making it more than a basket of bread through emphasize



Comparing Function and Purpose

Dali

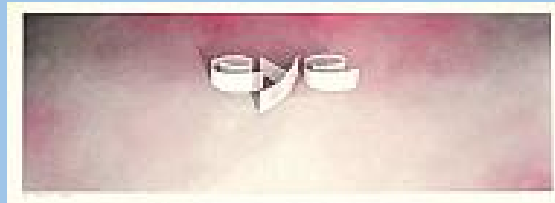
- Used complex forms and space to create more of a conceptual meaning from these unrealistic forms and structures.
- Used color to emphasize the importances of a component in his pieces.

Both

- Use of color to give normal object and ideas a higher value and meaning through art.
- Their backgrounds being contrasted with the main focus of the piece to give it more significance within their pieces.
- Used gradient with their backgrounds to transition one color to another efficiently.

Ruscha

- Used basic word to create a more significant meaning with them through the contrast of the background and the texture of the words.
- Mainly made pieces with font-specific words giving a definition through his technique.



Comparing Formal Qualities



Dali

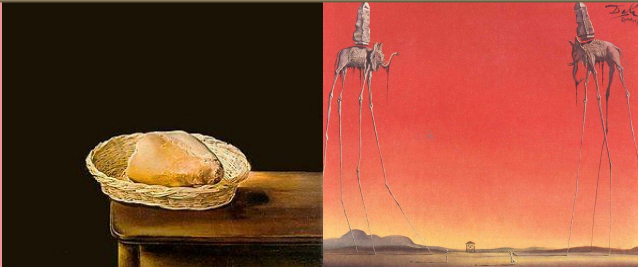
- Used conceptual objects to convey a bigger picture and meaning.
- Dali's art portrayed the human mind, and is depicted through his surrealist art method.

Both

- Used uncommon themes to create a conceptual meanings from unrealistic elements within their art.
- Portrayed their expressed meaning through their surrealism and conceptual within their pieces.

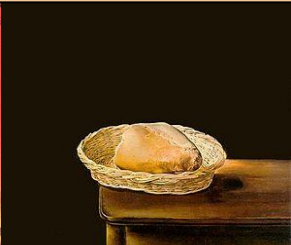
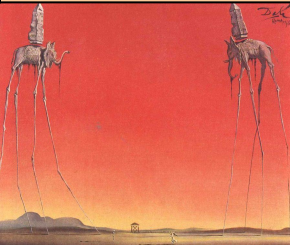
Ruscha

- Used form to convey meaning through simplistic everyday words.
- Worked with Everyday normal objects and gave them a higher meaning through background and texture.



Comparing Cultural Context

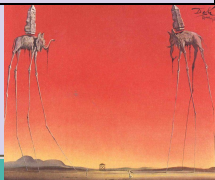
Dali	Both	Ruscha
<ul style="list-style-type: none">• Influenced by dark periods and event that occurred during his career, like the holocaust period.• Began his art career during the great depression.	<ul style="list-style-type: none">• Inspired by surrealism and conceptual art and worked around the idea of imaginary.	<ul style="list-style-type: none">• Influenced by american consumers and their culture and everyday way of life.• Painted his environment around his home and
	<ul style="list-style-type: none">• Both captured their environment through the use of their life experiences.	<ul style="list-style-type: none">• workplace and captures the iconic states around him.• Lived in southern California so his art was inspired on a lot of hollywood and popular media and media industries.



Comparing the Artistic Styles



Dali	Both	Ruscha
<ul style="list-style-type: none">● Introduced the idea of the human mind and created many unrealistic situation within his piece.● Opened new ideas and expanded the limitations on what art can be through unreal visual concepts and surrealism.	<ul style="list-style-type: none">● Focused on emotions and meaning through technique.● Depict their art through the use of form and illusion within their pieces.● Both inspired by surrealism and their art is inspired of the concept and movement of surrealism.	<ul style="list-style-type: none">● Used line to create a sense of control of movement with his piece "Faucet" with the parallel flow of water coming out of the faucet.● Used pop art movement to depict popular media and landscapes through the use of geometric shapes.● Introduced the use of font-specific text being used as a conceptual art form.



Comparing the use of Emotions



Dali

- Illustrated emotions through the use of form and tone by the surreal use of space and perspective and size with all the components in his pieces.
- Portrayed emotion through the contrast of highlights and dullness within his pieces.

Both

- Depicted emotion without visually presenting any visual emotion within their piece's.
- Both portrayed emotion through conceptual meanings interpreted through examining the visual significance within their piece's.
- Both used texture to convey emotions within their piece's.

Ruscha

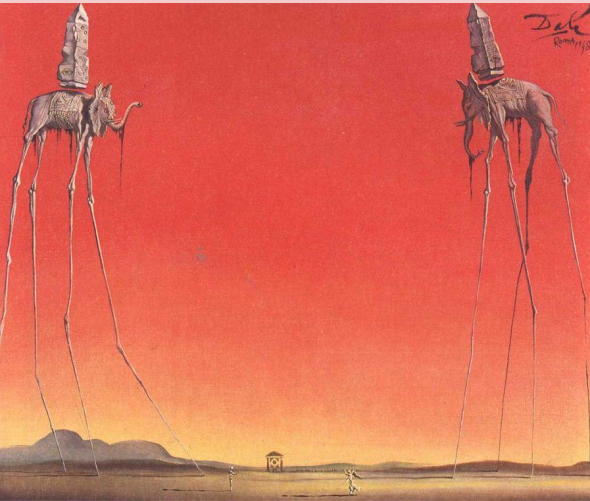
- Portrayed emotions through the use of background contrasting common words presented in a three dimensional form.
- Portrayed a lot of emotion through the use of color.
- Portrayed a lot of emotion through the use of gradient and how the background contrasts with the foreground.



Connection to Personal Work: Dali



“Room”



“Elephants” by Salvador Dali

This piece “Room” was inspired by Dali and his Surrealist art style. I used Dali for most of my work because I am primarily influenced by surrealism and Dali uses surrealism to create innovating unrealistic environments. The imagination that surrealism uses to create these fantasies of art and new views on life and the aspects of it. I used Dali surrealism to give me a new lense to look through at the world and the environment I live in.

I used Dali’s exaggeration of proportion In my piece to create a sense of make believe, like a dream only seeming real from the figure of your imagination.

Connection to Personal Work: Ruscha

My piece "Stress" was inspired by Ed Ruscha and his use of words to create a meaning through them. I used his method and related towards myself and used facial expressions to describe my piece and the word that would describe it is my title. So instead of using the word stress, I used the expression with emotion to convey my meaning of my piece.



(Me with)
"City"

Ed Ruscha

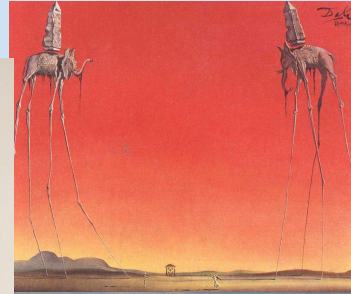
My research is based and primarily on how the meaning is presented within the piece and why is it significant. Instead of depicting the theme through words, I used faces with dramatic exaggerated faces of stress. I researched Ruscha and his use of solid colors and how he creates meanings from ordinary objects inspired me to use that concept and apply it to daily normal objects that I use within my life.



"Stress"

Connection to Personal Work: Cultural Significance

My piece “Stress” inspired by Ed Ruscha and his piece “City” and how his piece is capturing the city through the use of blue colors transitioning into a green gradient at the bottom. This colors could capture how his environment was modern and he lived in the city and would be in blue and urban communities. I used that gradient of colors within “Stress” to depict how the stress I have is based off of my environment and the responsibilities I am facing. they are very scattered and colorful as I deal with school home and life's complications living in the city as well.



My piece “Room” inspired by Salvador Dali piece “Elephants” and how his use of the events that were occurring during his time period that inspired his art. In comparison to my art I used the events that were occurring within my life to create

my art. I used this connection to what my American culture is like growing up getting an education and being at a desk in my room throughout my life.

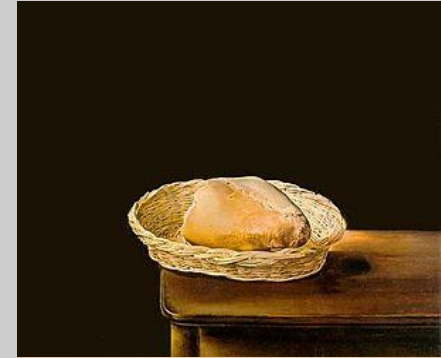
Connection to Personal Work: Formal Qualities and Materials



“Stress” & “Room”

With “Stress” and “Room” I used the same materials as my artist inspirations. Acrylic paint was used for all of my paintings and used their techniques of blending for my background of “Room” taken from Ruscha’s piece “City” with his gradient of blue and green. I was also inspired by the use of contrast of bright colors with a black background.

In “Stress” I used the concept of Dali’s piece “Basket of Bread” where the warm colors are emphasized with a black background. I took that and used it to emphasize how warm and centered on attention the faces in my piece “Stress” means by using the black background. I took the use of colors from my artists and used their techniques of contrasting them along the background.



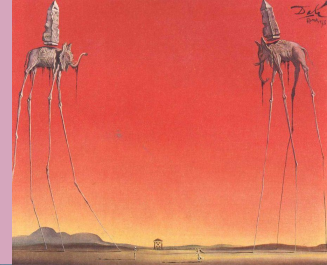
Connection to Personal Work: Function and Purpose

Ruscha's piece "City" used a closed central somber vibe with the purpose of his piece to be very secluded with how he feels when in the city. With my piece "Stress" I used his concept and connected to where my purpose is overwhelming and full of anxiety. Instead of being simple it is clustered with many frustrating vibes.



Dali's piece "Elephants" uses Perspective as a purpose of having a contrast of emphasize of importances on certain aspects in the piece. I took his purpose and function of perspective and space to create the complex views

With the desks in the sky at different distances in my piece "Room." It made the optical illusion of how close and far they were in the sky



My pieces conveyed the function through my meaning which is personal identity and how stress and daydreaming at desks connect personally, and I used my artist inspirations ideas of how they convey their meanings within their pieces and I changed their method to relate more to myself.

