

Development of Initial Ideas

Process: Block Print

The start of my block print "Twins" consisted with planning sketches with them being inspired by German expressionism. I would have each planning sketch be an idea based off one of the three artist inspirations I had for this piece. I had three choices to create my block print piece and the decision I made was to create my piece based off "Brothers" by Robin Blue and for the other two sketches those ideas have never been executed into their own pieces still today and consider making another one of my planning sketches from this piece as its own piece. But I stuck to this idea for its closer connection it would have with my overall meaning impacting my process more than my other ideas.



So for the next step is to convert my planning sketch into a final piece and use the idea from my inspiration and created connections with my personal identity and I add more elements towards my piece throughout my process.

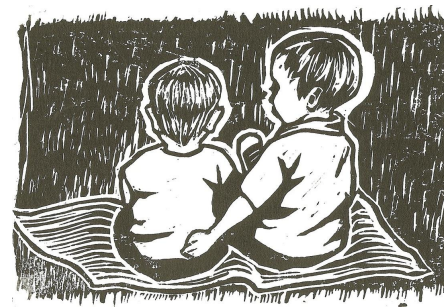
Artist Investigation

For my block print I was inspired by "Brothers" by Robin Blue using German Expressionism. And "The Widow" by Kathe Kollwitz using German Expressionism as well. My artwork is similar to Blues and Kathes by how we show emotion, just from looking at it. It shows passion and companionship between two significant others. How I tried to depict sadness in my piece



"Kathe Kollwitz: Biography & Artist | Online Homework Help | SchoolWorkHelper." Online Homework Help SchoolWorkHelper. N.p., n.d. Web. 11 Oct. 2016.

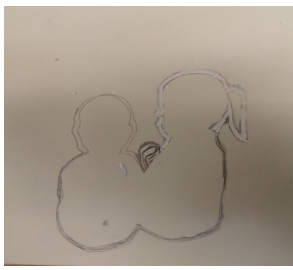
is the girl showing the boy signs of closure. Also in comparison to Blues piece, the older child is there for their younger siblings because I'm the younger one and my sister is five minutes older than me which is shown in my piece with the size difference. As we were younger as a joke my dad had Sam pick on me by saying I had to listen to her because she was older. How my piece is different from my artist inspiration is I have a girl instead of a boy. This is because I have a twin sister that's all. I made her look like a girl instead of a boy by adding a ponytail to the back of the boys head in Robin Blues piece. I also have a different background in my piece. I added more detail I'm my background so that it will give the boy and the girl in my piece more meaning and unity which makes it stand out more as the main part of my finished piece. I also used the art movements and techniques from my other two inspirations for my final piece. I used the same shading technique for my hill that the boy and girl in my piece are sitting on as "The Widow" - by Kathe Kollwitz did for her skin in her piece.



"Prints." Robin Blue. N.p., 2011. Web. 11 Oct. 2016. <https://robinblueart.wordpress.com/prints/>

Experimentation

To add some more spice from my inspirations background in his piece and to make it my own I changed the theme and background to represent a personal meaning.



Unlike his, there's just little dashes going down in his piece, so I experimented my piece by adding text and lines going diagonally for the background to get rid of all that extra space, the words I then crosshatched them out so you couldn't read them in the final piece. I did this to show the meaning of how others see me as to how I really feel inside at times. These words are all thing you would say someone when your trying to be positive and nice. Although that's not how I feel but others don't see that just like how they won't see the words in my piece but I will. lastly, I changed this piece to show me and my twin sister that is being there for me in a time in need. I added a ponytail to make the boy look like a girl instead. I decided to get really crafty and add hidden meaning in this piece.

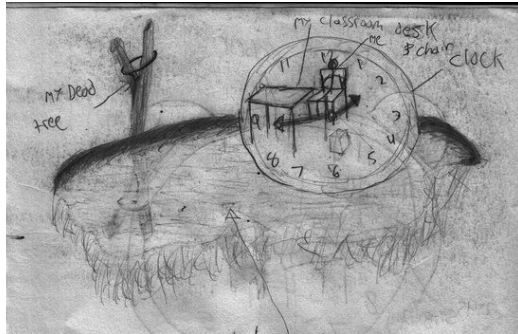


Reflection and Critique

This piece "Twins" represents my life as a child and who was there for me the most in my life. This was my twin sister. Siblings have to stick together and we always did and still will. She was there and had my back when I feeling down. I don't know where I would be let alone alive if I didn't have my sister to guide me. This block print I found helped me express this moment of time in my life. My inspiration piece is "Brothers" by Robin Blue. This artist isn't famous, but isn't a bad artist. I just liked the idea when looking at his piece so I tried to think of some ideas to make one of my own that is inspired from his piece that still can represent my topic of emotion. Throughout this project, I didn't have almost any mistakes. The process was fairly simple but I still struggled going through it. my strengths were the quality of my work because I took a lot of time to make my final piece looked great to me. I worked at a fairly slower pace Though if time was not a factor, then this project alone wouldn't take me long to finish, but since my time management skills were lacking it took me some time to complete.

Development of Initial Ideas

This piece was made to represent my Depression. I Wanted to depict the sadness and the visual face expression that I had when I was younger. My piece shows how my mentality rests on the weak limbs of a tree branch and how the concept of time for me was frozen. My finished piece was influenced by Salvador Dalí work of "The Persistence of Memory" because this piece really resonates with me. I had a connected to this piece made during the surrealism period. My piece was made in Adobe Photoshop and I collected a variety of images that I used for my finished work.



Process: Digital Collage



my depression from the bullying in school. The desk is similar to the table in Salvador Dalí piece. With my piece instead of the desert, I put my images on a lake so that there not melting by the heat of the sun and so I can depict the water as sadness. Although I mainly used "The Persistence of Memory" by Salvador Dalí for my piece I also used another art piece of his for my collage called "Illumined Pleasures" by Salvador Dalí. I used the effect of a picture inside a picture that "Illumined Pleasures" by Salvador Dalí had by having me and a desk inside a clock. I used his ideas in "Illumined Pleasures" as for how he had random objects in a plain area, so what I did was put a tree on a beach in a lake. This piece has a deeper meaning and it is up to the eye of the beholder to discover it. Based off these comparisons this is how I made my piece.

Artist Investigation

I made my piece based on the essay I made that explains my past. So using this information I found Salvador Dalí and I saw what reflections I could make my piece based off him and his artwork. My inspiration piece is "The Persistence of Memory" by Salvador Dalí in 1931 of Surrealism art. He was known for his surrealist paintings during the surrealism period. One of his most famous pieces is "The Persistence of Memory" with the melting pocket watches and the landscape in the background. He Describes his paintings as "hand painted dream photographs". My piece in comparison to my artist inspiration is similar to the clocks he had that represent memory in his piece and it represents the same In mine.

The droopy dead tree in my piece represents the structure supporting my positivity and how it's hanging on its last limb. the tree is similar to the dead tree in my artist inspiration piece. The desk in my piece represents how I obtained



"MoMA Learning." MoMA. N.p., n.d. Web. 27 Sept. 2016.

Experimentation

So this is where I started distorting my picture by playing with the puppet warp tool. I used it on the tree and warped it to make it hold the clock. This was to make the tree look like it was holding the clock over the lake. Then I distorted the clock to make it look like it was drooping and melting from the tree. Then I wanted to see the entire face of the clock but I still wanted me to be seen inside the clock. So I found out how to make me transparent enough to where I will still be noticeable and the entire clock face will still be seen as well. I also did this so it didn't look like I'm actually sitting on the clock. Lastly, I didn't want it to be colorful because that looks too happy to me. So I found out how to grayscale my final piece with research online and I turned everything gray so that I can really depict the sad gloomy expression that I was going for in this piece.



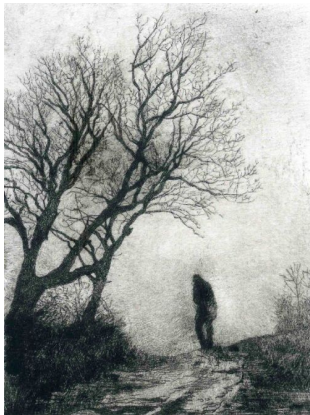
Reflection and Critique

This piece is titled "Losing" which represents my life as a kid and how that time and memory is lost with depression and sadness. For this piece, I used Adobe Photoshop CS6 which became very helpful due to the limited resources that I have. The artist inspiration for this piece was "The Persistence of Memory" by Salvador Dalí. The focus of this piece is to depict my depression and insanity while in school as a kid. All of my photos were taken by me and the "The Persistence of Memory" photo was taken off a website that I have cited. What I've learned is that you got to stay on task to produce a finished piece on time and I didn't fully do that. I struggled with my ideas and didn't settle in until the last minute. I wanted to put a lot more work and ideas into this but I ran out of time. I also learned that you need to take your time with puppet warp because it is easy to really unrealistically distort your image. I lastly wish my tree wasn't floating on the ocean but since I didn't get a photo of the beach I just used the ocean instead. Although making these mistakes I have to give me some credit because I am new to Photoshop and everything that came with this assignment. So for the finished product that I have done with the little knowledge that I have, I made a canvas in Photoshop and then I took all the collected images that I wanted and I started cropping them out and refining their edges. I then used the lasso tool to take the image of a school clock and put it on first. I put it up on the right corner and I was going to do more with it later. I then cut the image of me sitting at a desk and I put it on the clock. There were edges that were sticking out of the clock, so I photoshopped it to make it look like I was on the clock. Then for the tree, then I go around the tree and really refine the edges myself so I can get rid of the blue sky around the tree in the photo.



Development of Initial Ideas

This dry point was inspired and created by German Expressionism movement and piece, and the central idea came from Bruno Cavellec and his piece "La Fuite", and his dry point of this boys helped me create my piece titled "Boy Laying Against The Tree". This piece was made to reflect how my mind was lost due to stress and wondering where I will be in the future. I didn't think I would do something with my life and still do today and it's a fear I live with. This piece has a deeper meaning that is related to my personal life. It has connections with my past life and my mindset as a child. This piece was made by carving into a piece of plastic with a sharp tool using the intaglio technique for printmaking by means of which lines are scratched directly into the plate. Then using that to print black ink onto a piece of paper.



"Drypoint."
Pinterest.
Pinterest, 1928.
Web. 7 Nov.
2016

Process: Drypoint



As I was younger I would wonder what I will do in life and how will I make it alive through my hard times as a kid. I still deal with this problem now as a teenager. In contrast with Bruno Cavellec piece my piece is also different due it having more detail in the background that is connected to my personal life and give my piece more meaning and unity which makes it stand out more as the main part of my finished piece.

Artist Investigation

Made this piece based on these artist inspirations. So using the styles that I found from my inspirations I then made my piece based off of their art. Artist Bruno Cavellec piece "La Fuite" inspired me the most and I wanted to recreate his piece in my own perspective and meaning. "La Fuite" is similar to my piece by how we show importance, just from looking at it. It shows struggle and glory at the finish in our pieces. How I tried to depict sadness in my piece is by showing the boy looking down on himself and struggling to find relief and relax. My piece has asymmetrical balance with the clock and path with the hills stands out more than the forest of trees. Life is a pain and he is struggling to reach the top of the hill and take the place over the future him lying there against the tree. Also in comparison to Bruno Cavellec piece, the boy is too stressed out and is lost, just like Bruno Cavellec piece. The boy sitting against the tree on the hill in the background is where the boy lost wants to be. I showed that the boy was lost by having him look down away from the clock in the corner meaning he lost the concept of time, also he is wandering into a forest and this represents his mind getting lost by wondering how he will make it in life.

Experimentation

I wanted to recreate different textures so that the trees look like they feel different than the boy in my piece. So I would use curved lines for the bushes and I would do many light cuts into my plate, and with the trees I made many deep cuts to make the bark look 3D. with me I used cross hatching so when I print it I will stand out. I also added a clock in my final piece than my planning sketch just because I can connect it with my digital collage because they both have similar meaning just expressed differently. I made six prints I wanted to make one where all the details were being shown. so I changed the amount of ink on each of my prints.



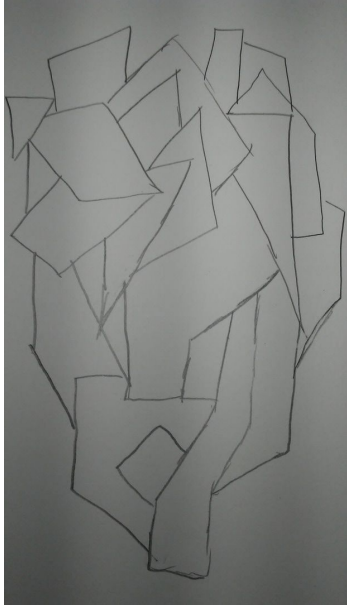
Reflection and Critique

This piece "Boy Laying Against The Tree" represents my life as a lost soul wandering through a vast empty matrix. I'm lost and can't collect myself and figure out what I want to do with my life. there are two people in my piece and there both me. one from where I am now and one of where I want to be in the future. The path represents the long trail that I will embark to make it to the future me that is leaning against the tree. It is similar to the song Green day "Boulevard of broken dreams, I walk a lonely road the only one that I have ever known, don't know where it goes... I walk alone." This song that I know can describe this piece and how its relates to me alone. My inspiration piece is "La Fuite" by Bruno Cavellec. This artist piece gave me the idea of what my piece will be just from looking at it. I liked the whole picture my artist inspiration was trying to depict in his piece. I tried to think of some ideas to make one of my own that is inspired from his piece that can represent my value and idea of emotion. Throughout this project, I did have mistakes. The printing process was easy to understand but it just was long and repetitive and it was a pain to just make one print. Also after finishing one print and having it turn out bad makes me have to redo the entire process where time would eventually run out and I would be stuck with these not finished pieces. With my prints it would have too much paint where you wouldn't be able to see the carved scratches. Or it would be not enough ink and the scratches barely show up on the photo.

Process: Mixed Media

Development of Initial Ideas

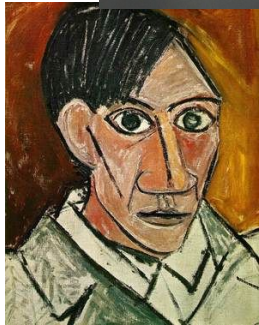
My mixed media piece "Gone With The Sea" is made from the abstract theme and cubism. I was inspired by Pablo Picasso a cubism artist know for creating this movement and revolutionizing it with many of his pieces. This piece is exploring identity and who one identifies as. many have trouble finding out who they are with their personality or ethics. Another example is how people are lost at times and like being stuck in the sea they don't know where to go next and are stuck in a hard place.



"Weeping Woman (1937)." Weeping Woman, Pablo Picasso: Analysis, Interpretation. N.p., n.d. Web. 05 Apr. 2017.

Artist Investigation

This piece "Gone With The Sea" is made from the abstract theme and cubism. I was inspired by Pablo Picasso a cubism artist known for creating this movement and revolutionizing it with many of his pieces. This piece is exploring identity and who one identifies as. many have trouble finding out who they are with their personality or ethics. Another example is how people are lost at times and like being stuck in the sea they don't know where to go next and are stuck in a hard place. I was inspired by my artist inspiration Pablo Picasso and his three different artworks "Aficionado", "Self-Portrait" & "Weeping Woman." I used these pieces because they all contained elements that I wanted to implement together into my final Mixed Media piece. While still creating my own idea I decided to do a portrait of a face like Picasso's "Self-Portrait" that's not mine and using shells to obstruct a face out of different seashells with different shapes and color. Now I wanted to use a lot of different color shells to connect to Picasso's piece "Weeping Woman". That piece contains a lot of purple in it so I wanted to copy that color to make my art look surreal and abstract which I did by finding shells with purple within them. I mostly was inspired by "Aficionado" by Picasso due to at first glance the piece looks like a bunch of geometric shapes together, but then when looking closer the picture is revealed and you then can see the portrayed image and that was my goal to accomplish with my piece.



"The Aficionado (The Torero)." Own the Most Famous Painting Reproductions of the World's Most Famous Artists. N.p., n.d. Web. 05 Apr. 2017. RasMarley. "Picasso, Pablo (1881-1973) - 1907 Self Portrait." Flickr. Yahoo!, 24 Dec. 2008. Web. 05 Apr. 2017.

Experimentation

The making process of this piece started with me painting the wooden mantle baby blue. Then I started to glue seashells onto the mantle and began the first coat of the face made out of shells. then I added a second layer to areas of the first that contained exposed mantle showing and covered each part showing. Then I used these all white shells for the eyes and then gave them blue pupils. then I made an outline of the nose and gave it two nostrils with black seashells. then I filled in the nose with shells within to make it stand out more. then I created the eyebrows and mouth. I used hot glue from a small glue gun to glue everything to the mantle but when it came to the hair I decided to use wood glue and glued that hair to the Mantle. The process could have been neater but in the end, I'm satisfied.



Reflection and Critique

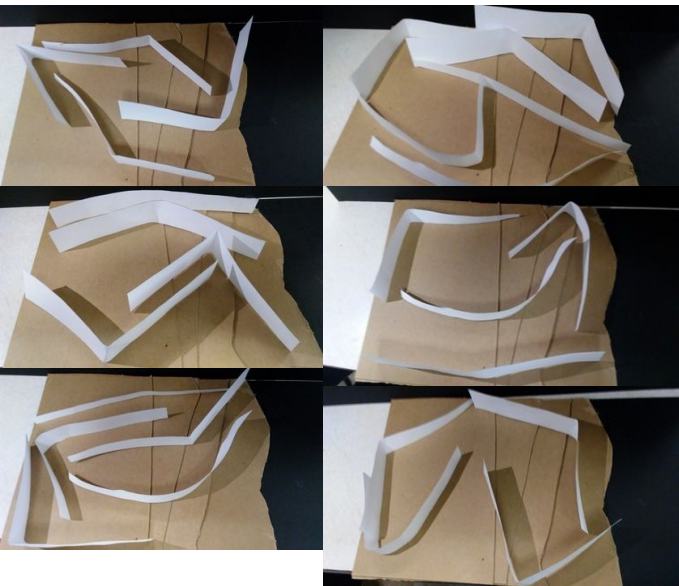
While making my Mixed Media I found out many strengths and struggles throughout the process. My struggles were finding the shells to give me a good example of how it connects to my artist inspiration. Another struggle while doing this piece is that when using hot glue from a hot glue gun it tends to leave strings behind which look terrible and makes the piece have poor craftsmanship but a lack of gluing resources we had no choice. Another struggle was gluing shells on top of other shells and making it look messy even though I was trying to make it look clean. my strengths were forming a symmetrical balance with creating the face out of the shell. Another strength was my formulated meaning I came up with that I created this piece from and how my title and art connect with the theme and artist inspiration quite nicely. The overall outcome of the piece was a success due to me getting my values and point across clearly with the art I have created and what in going to present. My experimenting was lacking I could have been riskier and have changed up the way I set up the base coat of shells that I put. My final piece and my connections and meanings are the strongest components to my inspiration because of the good execution I did with comparing the two.



Development of Initial Ideas

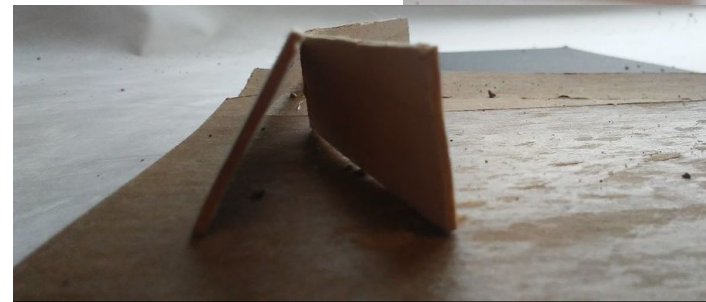
Process: Sculpture

"Falling Water" by Frank Lloyd Wright, "Widewalls" and "Tilted Arc" by Richard Serra. The meaning of this piece is represented by the amount of view allow to be seen from the entrance of this sculpture only allowing them to see their wall not what through it. I used the wood that was tilted bend and angled to contour the audience's view when going through my piece.



Artist Investigation

My piece "Sight" my inspiration was "Falling Water" by Frank Lloyd Wright, "Widewalls" and "Tilted Arc" by Richard Serra In my piece. I had smooth curves walls like Richard Serra with "WideWalls". "Tilted Arc" by Richard Serra inspired me the most with the creation of my piece. It helped me capture the three points of our project which is place, path, and portal. Serra helped me capture the element of path within my piece by me using a tilted arc to make my structure enclosed making it more like a path. The other inspiration of Serra with "WideWalls" inspired the least but it helped me figure out what my path would look like in a real life example. My piece title "Sight" was me trying to portray what you get when you take this path on in this place and exit through a portal.



(n.d.). Retrieved May 04, 2017, from <http://www.fallingwater.org/> W. (n.d.). Richard Serra. Retrieved May 04, 2017 Tilted Arc. (2017, April 19). Retrieved May 04, 2017



Experimentation

I started by gathering the materials that I need for this piece. I grabbed wooden pieces, black stock paper, and cardboard to construct this project. Then I cut the cardboard into four pieces with an X-acto and then glued them onto my black stock paper which represents the water of the Bradford beach and the cardboard represents the sand of the Bradford beach. After I glued each of the cardboard pieces onto my black stock paper I then started to make the outline the place where I would be placing my wooden pieces. I made an outline with pencil of what my wooden strips would be like for my walls. After I cut the walls out I then glued them onto my sand on my piece. I then realized that there was a lot of excess glue showing on my piece so I decided to redo it and take more time with it and use less glue. After everything was glued I was finished with my piece.

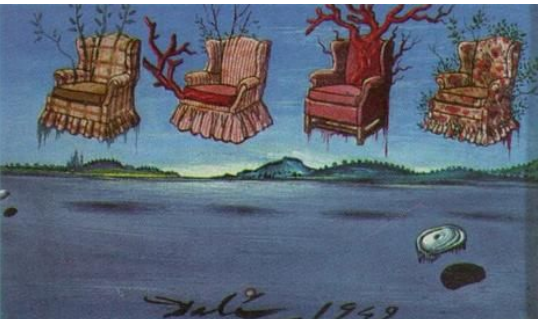


Reflection and Critique

Throughout the project, I've learned many things from this project some on accident. The first problem I had was how will I approach the three main components of MAID's room with a view project. I wanted to capture place, portal, and path with my piece but when planning this I didn't know how I would succeed with accomplishing all three within one piece. So what I did for place is I put it aside to make it stand out more on the beach. I was also successful with portal having the entrance entering being big but as you go in further it gets smaller. I also was successful with path by having one of my walls be tilted like my artistic inspiration to enclose my structure creating a path leading to the beach view. When being critiqued by Bob he told the group my piece was the best example of what we were trying to capture with this project the purpose of making this structure. Although what my piece was lacking was craftsmanship which I fixed after, but my piece was a mess with the hot glue showing in between the walls and it wasn't a clean presentation of the quality of my work. However this project has made me think more deeply of the reasons for many pieces like mine and my inspirations.

Development of Initial Ideas

This Painting was inspired and created by the surrealist movement and the central idea came from Salvador Dali and Ed Ruscha and his piece "Four Armchairs in the Sky", and his painting of himself helped me create my piece titled "Room." This piece was made to reflect how most of my life I have spend it at a desk within a room. just as all of what's on my mind is what is laid on my desk. Class assignments, letters, notes, homework, and college admissions, all of these are placed on my desk to test me to see if I'm ready for the next level of work and responsibility that is given with each task on my desk. the main goal of this piece was to portray what goes on in my mind and what is constantly pushing me to go forward and succeed.



Process: Painting

Dali, Salvador. "Four Armchairs in the Sky, 1949 - Salvador Dali." www.wikiart.org, 1 Jan. 1970

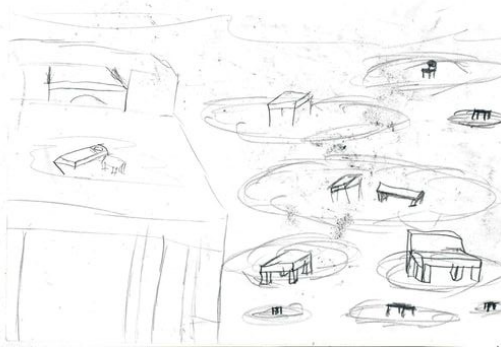
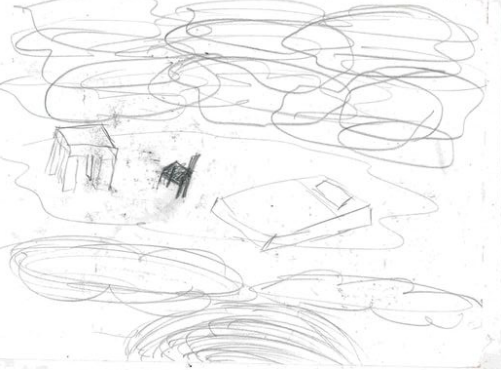
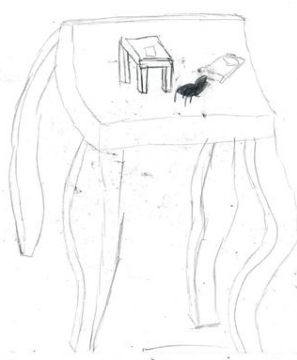
"In Past ShowInternational Pop at Philadelphia Museum of Art." Ed Ruscha | Standard Station, Amarillo, Texas (1963) | Artsy,



Artist Investigation

The piece "Four Armchairs In The Sky" inspired this piece "Room" because of how I could connect a conceptual meaning with my piece with the same concept of art as Dali's piece "Four Armchairs In The Sky." I used Dali's Piece to convey a meaning through the idea in his piece to connect it with a topic relevant throughout my life involving furniture. I also use Dali's piece to depict how furniture is used within all of our lives and we use them for their convenience and usefulness of being comfortable. That's their purpose and that's what I am describing

my piece through the help of my artist inspiration. Dali's piece inspired the way I would present my meaning of this piece by having the furniture that had importance and relevance to me in which desk and have them floating in the sky but to make it more realistic and more dream like I put my furniture on clouds to represent a pleasant view of relaxation. Also my blue sky in my piece "Room" was inspired by Dali's piece "Four Armchairs In The Sky" with his blending technique and use of colors and highlights to add depth to his background and so I used the same technique with my background but giving it sky like elements and features instead. My piece was also inspired by Ed Ruscha's piece "Standard Station" with his meaning on an ordinary everyday object everyone uses being captured and given a more significant meaning through his art. This meaning inspired me to fully go through with my idea of my piece "Room" due to how I wanted to also capture the significance of a everyday furniture being a desk that plays more important role then one would realize. Ed Ruscha's piece "Standard Station" also inspired my blending with all my lighting with the desk with his blending of his sky in the background of his piece. His use of the color slowly fading into the next with minimal transition and more of a sharp transition inspired me to do the same with how the light hit all of the desks in my piece.



Reflection and Critique

I was really happy on how my idea turned out it was exactly how I imagined it. if I could improve something on this piece I would improve the blending and also mostly add shadows to each desk to give them more depth in the piece. I think the piece has demonstrated clearly on what is occurring within this piece. My meaning of this piece is a little more conceptual and personal but this piece can be open to interpretation and could be represented for many different meanings just depends on the eye of the beholder. what I really loved about this piece is how I created the desk to make this surrealist piece of imaginary floating desks. The desk are well placed throughout my piece where they aren't irrelevant in my piece but also not overwhelming as well. the use of asymmetrical balance and how my piece has this where one side complements the other even though they are complete opposites.

Experimentation

For my experimentation I used different brushes to find the best composition to and his technique on how create my clouds and used that knowledge I obtained to create my clouds using his method on making clouds within his pieces.

My piece "Room" reflects on my artist inspirations and how I created my piece through using their pieces and ideas intertwined with my own ideas. my meaning and purpose is represented through the meanings of both of my artist inspirations. My use of furniture was inspired by my artist inspiration Dali's and his piece where Dali's use of furniture in his piece gives the furniture more meaning and significance than rather being just a piece of furniture.

Development of Initial Ideas

This Painting was inspired and created by the Abstract Expressionist movement and the central idea came from "Bullfight" Elaine de Kooning and "Untitled" by Jean-Michel Basquiat and his painting of himself helped me create my piece titled "Stress." This piece was made to reflect how most of my expressions in the past were cover ups to hide my true feeling from the world and everyone due to the fear of them being hurt.

"Elaine-De-Kooning-Bullfight.jpg." Denver Art Museum
Basquiat painting fetches record \$149m at New York auction.
www.bing.com/cr?IG=3DC38493AB674BD281E8DDEAF4F40721&CID=135086B16BF96CFD360E8D8A6AFF6DC5&rd=1&h=TjKklYrhHLdGRIRN2rPu-R0VcQGEfOyuxyJfdlIH5oQ&v=1&=http%3a%2f%2fwww.abc.net.au%2fnews%2f2017-05-19%2fbasquiat-painting-fetches-record-149mn-at-new-york-auction%2f8541480&p=DevEx,5040.1



Artist Investigation

This piece "Untitled" by Jean-Michel Basquiat inspired my piece "Stress" because of how I could create a conceptual meaning with my piece with the same style shown in "Untitled" by Jean-Michel Basquiat I used to convey a meaning through the idea in his piece to connect my lost of identity

through the use of a convoluted colors and brush strokes. The way Basquiat created a skull and the form of the skull I used to create all the faces that are on my piece. My central idea came from Basquiat's piece where I incorporated his piece into the main theme of my piece. My piece "Stress" was also inspired by "Bullfight" Elaine de Kooning and her art movement Abstract Expressionist is what inspired my piece and its elements within it. I was inspired by her use of colors in a abstract form to convey an overarching message and that is what i was attempting for my piece "Stress." My piece was also inspired by "Bullfight" Elaine de Kooning and her brush strokes within her piece and that is what inspired my background of horizontal strokes of dull warm colors bringing out the faces within my piece.

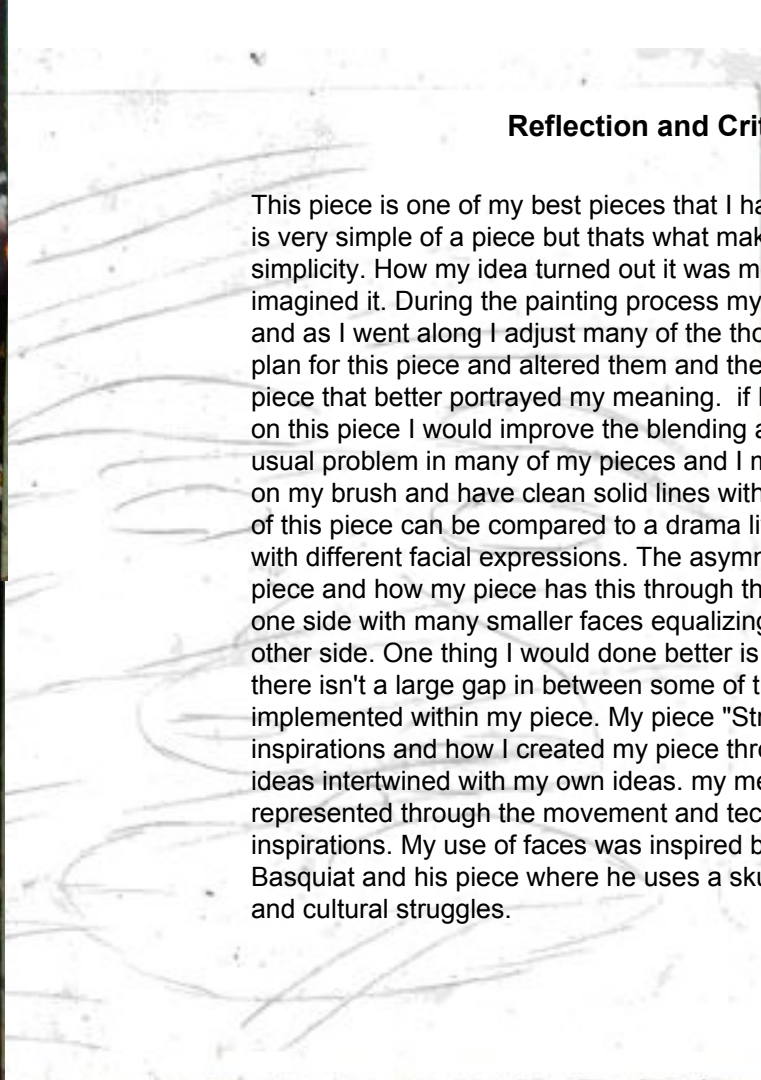
Experimentation

For my experimentation I wanted to see what direction my brush strokes for my background would bring my foreground out the most. But I also wanted it to blend with it to keep the abstract feel and not have them be too distracting and standing out within my piece.



Reflection and Critique

This piece is one of my best pieces that I have created in my opinion. It is very simple of a piece but that's what makes it better to me is its simplicity. How my idea turned out it was more than how I originally imagined it. During the painting process my ideas were continue to flow and as I went along I adjust many of the thoughts i had for my original plan for this piece and altered them and then created a more exemplary piece that better portrayed my meaning. if I could improve something on this piece I would improve the blending and brush strokes, this is a usual problem in many of my pieces and I must learn to put more paint on my brush and have clean solid lines within my pieces. My meaning of this piece can be compared to a drama live play with many masks with different facial expressions. The asymmetrical symmetry within my piece and how my piece has this through the larger face balancing on one side with many smaller faces equalizing the largest one on the other side. One thing I would done better is take better process photo so there isn't a large gap in between some of the major parts that was implemented within my piece. My piece "Stress" reflects on my artist inspirations and how I created my piece through using their pieces and ideas intertwined with my own ideas. my meaning and purpose is represented through the movement and techniques of both of my artist inspirations. My use of faces was inspired by my artist inspiration Basquiat and his piece where he uses a skull to represent his identity and cultural struggles.





Process: Painting

Development of Initial Ideas

This Painting was inspired and created by the Abstract Expressionist movement and the central idea came from "Bullfight" Elaine de Kooning and "Untitled" by Jean-Michel Basquiat and his painting of himself helped me create my piece titled "Portrait of Mind." This piece was made to depict how all of my true feelings and emotions are within me and aren't show from the outside. How the stress, anxiety, sorrow, devastation and many more personal feelings are not shown from me in the outside. I am not the type of person to be expressive of my feeling and instead bottling them up.

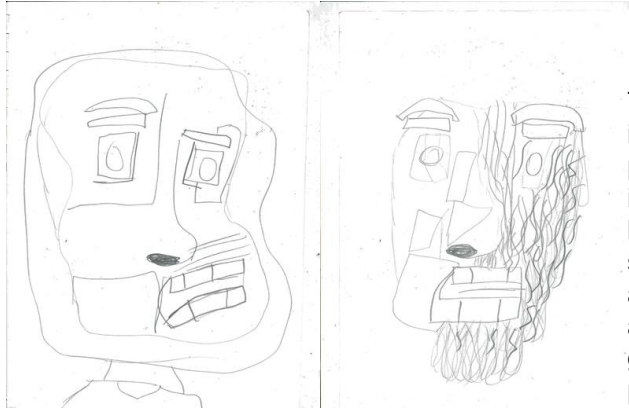


Artist Investigation

This piece "Untitled" by Jean-Michel Basquiat inspired this piece "Portrait of Mind" because how I use the expressionism movement inspired by the ideas of my artist inspirations and how their techniques are used to convey their meaning through their piece. My piece was mainly inspired by "Untitled" by Jean-Michel Basquiat and his piece defining the culture of Basquiat and in relevance to his meaning within his piece my piece "Portrait of Mind" is the identity of me and how I hide it within me who I truly am. My piece meaning is how my true identity and who I am is being hidden within myself along with my inner emotions. Basquiat piece "Untitled" inspired me the most with his entire piece and how he portrays identity with the use of a skull along with a very obscure use of brush strokes. I used Basquiat's use of brush strokes to create my piece and used the abstract use of colors and technique of it from my other artist inspiration "Bullfight" by Elaine de Kooning. Her use of a solid background along with the strokes of color to create her piece is what I used when making my piece "Portrait of Mind."

Experimentation

For my experimentation I wanted to add some culture within my piece where the inner self is quite important within their culture. and so I added it with the Chinese symbols representing inner strength and how I have embraced it and learned to have guidance and to be successful which is why I painted the symbols.



Reflection and Critique

This piece is one of my least appealing to me but has a lot of potential and is really connected towards myself at a personal level. My identity of best pieces that I have created in my opinion. It is very simple of a piece but that is what makes it better to me is its overwhelming features. I wish I didn't have the distractions to hold me back. I want to have the motivation to be successful and want to have a future I hate not putting effort within my life and wanting the best for me and I have all my life just been pushing it off and it all just bottled up inside me. I feel like I won't make it in life if I keep going the way I am, I want to show pride within my work I have the potential and so I need to get my life together and show concern and portray my abilities that i have and not feel like I won't make it in life. How my idea turned out it was more than how I originally imagined it I would make it look less sloppy if I could but there a part of me that wants it to look like that to convey my meaning more. and so I need to find a balance between the effort and look of how it is depicted within my piece still keeping the feeling of cluster and stress. if I could improve something on my method for my piece I would improve the blending and brush strokes, this is a usual problem in many of my pieces and I must learn to put more paint on my brush and have clean solid lines within my pieces. "Portrait of Mind" reflects on my artist inspirations and how I created my piece through using their pieces and ideas intertwined with my own ideas. I used their Expressionism movement and methods of design to create my piece and how its use of colors are sloppy but is does so to give it more of a stressful panicking feeling when looking at my piece. if it looked neat and clean with the brush strokes it would be less significant towards my meaning and how I could represent my anxiety.

Process: Painting

Development of Initial Ideas

This Painting was inspired and created by the Fauvism movement and my artists inspirations Mountains at Collioure (1905) by André Derain and HENRI MATISSE (1869-1954)and his piece 'The Roofs of Collioure', 1905 (oil on canvas). My piece is a door and the back of my head looking into this open door and looking into the opportunity each little line of color representing each opportunity I have within my life and all the one I can have depending if I walk through the door and take those path to success or defeat.



head. My artist inspirations use exaggerated surrealist colors to create their unreal landscapes within their pieces and I use their use of colors to represent all the opportunities that are expressed within my life and how they are useful for me. I used my artist use of texture to make all the colorful opportunities within the door I have within my piece feel special as each distinctive line of hue is different size width and color as the other one each representing a different opportunity. I used value like my artist inspiration Matisse and Derain to create the texture and importance of the hues used within my piece. unlike my artist inspirations which have a high intensity within their pieces I have a more dull intensity within my piece with the back of my head and the structure of the door and the contrast with the bright background.

Artist Investigation

My piece "Opportunities" inspired by my artists inspirations Mountains at Collioure (1905) by André Derain and HENRI MATISSE (1869-1954)and his piece 'The Roofs of Collioure', 1905 (oil on canvas). I was inspired by their fauvism movements and use of lines and brushstrokes. I implemented their use of hues of different saturation to create highlights within my piece when making the back of my head in the middle of my piece. I used different shades of brown to create the light and dark points of the back of my head within my piece. while showing each individual brush stroke being separated and standing out with the contrasting solid tan hue background representing my



Experimentation

I experimented with many different types of brushes that would be a great composition of length and with for creating a linear brush strokes. I learned to create very fluent consistent brushstrokes and use the Fauvism art style to create a texture within the elements in my piece and giving them more character and connection all being within the same techniques.



Reflection and Critique

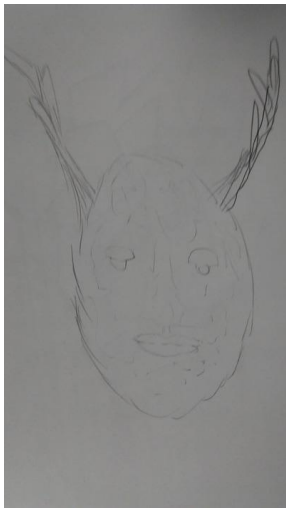
First impression about my piece that it is the most cleanest piece I have made from the dedication to the effort with my brush strokes and presentation of lines in my piece. what I would have done better within the process of this piece is the process photos that were left out and forgot to be taken. I don't have a process photo of when I added a tan template of my head that would be my outline for the back of my head and it would be the background for the texture of my hair that would be in the fauvism movement art style. I also didn't add the process of making the back of my head and how I took each step on creating it. I would go back and put more detail in this piece because it needs a little more and the back of my head need more form and is too flat same with my ears. "Opportunities" reflects on my artist inspirations and how I created my piece through using their pieces and ideas intertwined with my own ideas. I used their Fauvism movement and methods of design to create this piece.



Process: Clay Sculpture

Development of Initial Ideas

My Organic and Industrial piece "Aged Revolution" it is relating to identity "The Classification" really. All of my life I wanted to know what I was classified as you know the type of person I am or want to be. the meaning in relation to me, is I am like a deer. when a deer gets caught in headlights they freeze up and don't move. In many ways, this is me stuck in time one could say. In a lot of ways, I am like a deer in headlight cause I don't fight, I flight when I get caught in a situation I can't handle I freeze up and become stiff.



Artist Investigation

I made "Aged Revolution" based on these artist inspirations with their art movements and the styles that I found within their work to implement into mine. the art that inspired me the most is "Born Wild" by Kelly Thiel and her piece inspired me the most with the idea of capturing the innocence and relating to the fear in a deer when caught within headlights. Kelly

Thiel isn't knew world wide and she makes many art pieces. My meaning is more related to my inspiration Claes Oldenburg "Soft Toilet" due to both of us having no visual significance with our pieces as they are very obscure and visually not as appealing as much other art. That is where our pieces capture the real significance of our pieces and how we are unique and art in our own ways. My piece most defiantly is the innocence of me being too soft like how clay first is when talking it out of a package. the fact is I don't like to hurt other so when I am caught in a situation where I must fight just like how a deer must fight to stay alive but in the end, we both just stand there caught in the headlights. Claes Oldenburg: Soft Toilet because of how we both are still and have no visual significance at a first glance. Until they find their own visual significance with there own personality. I wanted to display how a clay sculpture with little visual significance could represent my choices within life and which this factor of flight has played a major role. My inspiration "Born Wild" by Kelly Thiel, art movement is Modernism which I tried to imply within my art piece "Aged Revolution" with the clay figure of a face with antlers on an animal portraying innocence and deer heads on a mantle.



Reflection and Critique



While making my Organic Vs Industrial I found out many strengths and struggles throughout the process. My struggles were first finding an inspiration and ideas on what I want to make my pieces from. I wanted to make a piece based capturing innocence. I also struggled a lot attempting to create facial features on my face. Making it look good and smooth was a big struggle and mainly fully making my piece smooth was a pain itself. Also keeping the face proportionally even and aligning it was hard to create a smooth surface but also a realistic one that is evenly curved. But the end result became a strength due to after all that struggle I create a good final piece that I'm proud of. What I wished I could improve is the wire antlers although I wanted them to be thin I also wanted them to look a little more like antler rather than wires sticking out of a head. Also I wished my process photo were better constructed with the background I took them with.

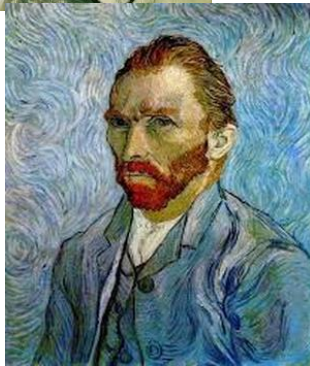
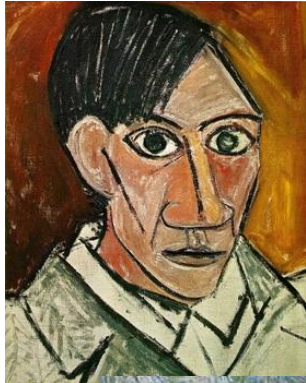
For the organic vs industrial piece, I planned to use clay and other resources to create my organic vs industrial piece. I would make a sculpture of my head and have antlers on my head. Then I would put it on a wooden mantle that I could make or buy at an arts and craft store. This could resemble how I can capture innocence. The fact the sculpture is going to harden and become stiff can also connect how a deer in headlights in comparison to my sculpture being still in time. This was my artistic idea with the meaning I could connect with my piece if I do choose to go through with this. For the movement that I would connect with this, I could relate it to Claes Oldenburg: Soft Toilet because of how we both are still and have no visual significance. What feedback I got from my classmates is to have a better understanding of what my meaning is my mixed media piece. Why this because I am still unsure about what my piece means to the viewers and myself personally. I bought air dry clay that is pastel white to make the sculpture of my face that will be on the wooden mantle. Then I could use real deer antlers or ones I could make out of wire to put them on top of my sculptured head. They also said I should paint it and I'm still deciding.



Process: Painting

"Etching." Pinterest.
Pinterest, 1920. Web. 7
Nov. 2016.

Retrieved December
15, 2016, from
<http://www.biography.com/people/vincent-van-gogh-9515695>



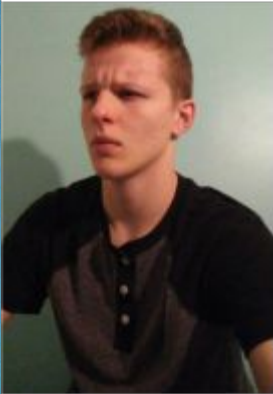
Development of Initial Ideas

This Self portrait was inspired and created by post impressionism movement and piece, and the central idea came from Vincent Van Gogh and his piece "Self Portrait", and his painting of himself helped me create my piece titled "Stern and Sorrow". This piece was made to reflect how my actions tell one thing but my emotions say another. So that's where the title come into play expressing how i may look angry but inside i'm sad. I used the raw emotion in Vincent Van Gogh piece to represent my feelings. I didn't think I would do something with my life and still do today and it's a fear I live with. This piece has a deeper meaning that is related to my personal life. It has connections with my past life and how I deal with my emotions. This piece was made by painting on a canvas with Acrylic paint.

Also in comparison to Vincent Van Gogh's piece, he looks like he is strained so to make my piece have similarities to one of my inspirations I made my piece to make me look strained as well. also with my tones and blends of color is one similar to Vincent Van Gogh's self-portrait as he used similar hues to create this piece as so did I. My piece represents Emotions and how we visually and mentally bottle them up and express them through our body language and facial expressions. As I was younger I would bottle up my emotions a lot and that's never good because you can't get it off your chest and get some closure from a friend a sibling or adult. You only cause self-harm when you bottle up your emotions. I wanted to have a lot of detail in my piece similar to my inspiration Fritz Schaeffler, "Self-Portrait" and his fine amount of detail in his self-portrait in the German Expressionism style. In contrast with Pablo Picasso's piece "Self-Portrait," my piece is different due to the different position he is facing compared to mine and also the art style cubism to my post-impressionism piece. I did want to use Vincent Van Gogh's brush technique and the flow of his background but I didn't have the time to do

Artist Investigation

Made this piece based on these artist inspirations with their movements Cubism, German Expressionism, & Post-Impressionism. So using the styles that I found from my inspirations I then made my piece based off of their art. Artist Vincent Van Gogh piece "Self-portrait" inspired me the most and I wanted to recreate his piece in my own perspective and meaning. Van Gogh was a post-impressionist painter that was known for his beauty, emotion and color, highly influenced 20th-century art. He struggled with mental illnesses and suffered to what they seem as depression. He remained poor and mainly unknown throughout his life. His "Self Portrait" is similar to my piece by how we show importance, just from looking at it. it shows the mixed bottled up and also expressed emotions that we have throughout our daily lives. How I tried to depict sorrow in my piece is by showing disbelief. I like to image it like I'm looking over the horizon. As I'm looking over the hill at the sunset I have doubt as for the expression on my face. Looking down on myself in relation to one of my artist inspirations Vincent Van Gogh and his piece reminded how you try to look tough and stay strong but inside your fragile and can be easily broken. A lot of people struggle with inner conflict and it can be hard to control your emotions.



Experimentation

The finishing touches were me blending my skin tones with my highlight and darker areas in my face to capture the light beaming onto my face to recreate my image. I tried making different base skin tones to see which one fitted me the most. You can find this process in my Painting process slideshow. In the end found this peach pink skin tone that was very similar to the skin tone of my photo of me.

Reflection and Critique

Throughout the process of self-portrait, I've learned many things from encountering some difficulties. First when gesso the canvas, I had to do it three times due to me having too light of a coat. My friends then thought I didn't use gesso and white pain instead. I learned that it is better to lay the canvas on the ground so that it will not warp when it is drying. With the background, one thing I would change is to paint the background with the same texture and brush strokes as my inspiration van gogh. I am also bad at blending colors so I had gotten help by my teacher to show me how to and he helped me make textures. If I could redo this project I would then start earlier on that one because with this piece I would be more satisfied with my work if I wouldnt have of done it at the last moment. Due to me doing the portrait at the last minute I only have a plain blue background. I will make it better later and I plan to reupload the final image of my piece with a good looking background.

Vincent Van Gogh piece "Self-Portrait" is like my piece by how we demonstrate significance, just from taking a gander at it. it demonstrates the blended suppressed furthermore communicated feelings that we have throughout our everyday lives. How I attempted to portray sorrow in my piece is by demonstrating skepticism. I get a kick out of the chance to picture it like I'm investigating the horizon. As I'm investigating the slope at the dusk I have question

with respect to the look all over. Looking down on myself in connection to one of my craftsman motivations Vincent Van Gogh and his piece reminded how you attempt to look extreme and remain solid yet inside your delicate and can be effortlessly broken. Many people battle with internal clash and it can be hard to control your emotions. Also in comparison to Vincent Van Gogh's piece, he appears as though he is strained so to make my piece have likenesses to one of my inspirations I made my piece to make me look strained too. likewise with my tones and mixes of shading is one similar to Vincent Van Gogh's self-portrait as he utilized comparative tints to make this piece as so did I. I needed to have a great deal of detail in my piece like my motivation Fritz Schaefer, "Self-Portrait" and his fine measure of detail in his self-representation in the German Expressionism style. In contrast with Pablo Picasso's piece "Self-Portrait," my piece is diverse because of the distinctive position he is confronting contrasted with mine furthermore the craftsmanship style cubism to my post-impressionism piece. I wanted to utilize Vincent Van Gogh's brush procedure and the stream of his experience yet I didn't have room schedule-wise to do.

Development of Initial Ideas

In this Tryptic piece "Living The Life" I express who am I, The artist in the city, and the city in the artist. In my Tryptic I represent how I am distant from the world and how I do my own thing. It also represents how I hide my actual myself from the public and act like someone that I'm not. This piece lastly represents how the world through my eyes is broken.



Artist Investigation

Made this piece based on these artist inspirations with their movements surrealism and Modernism the styles that I found from my inspirations I then made my piece based off of their art. Artist Jacek Yerka piece "Dream World Painting" inspired me the most with my artist in the city and I wanted to recreate his piece in my own perspective and meaning. Jacek Yerka is a surrealism artist that isn't really known for his work and he has many



beautiful pieces. His art has a beautiful way of making the viewer create their own meaning to his piece and I want to follow this when making my Tryptic. My piece is different to Jacek due to how I represent myself in the piece instead of the city in my head I'm far away and I'm rather distant from the city. The artist inspiration that inspired me the most for my about me part of my Tryptic is "Girl before the Mirror" by Pablo Picasso. Unlike my artist, my piece differs from my inspiration on that instead of pregnant women it's myself in the mirror.

But I have a mask on in the mirror and that is what my main idea for the meaning. The artist that inspired my city in the artist piece was mainly Dali's piece "Sleep" but the pink and yellow city above my head was inspired by no other than my artist inspiration Jacek who had the city on top of the head which is what represent my meaning for that piece.

It shows to me all the thoughts that we have in our head making use stressed and full of headaches due to the weight of the world on top of us. I wanted to depict the sense of misplaced and unwanted within my piece, these are what make me broken my spirit and determination is what make me whole. I also was going to show ambition, and how I hide. I wanted to represent with one of my pieces how my head is full of thoughts which will be the main idea occurring throughout all of my pieces. This piece wasn't very inspired by the Son of Man -Rene Magritte 1964 because it was a original idea to have some of his art implemented into mine but in the end my plan changed and I never used that idea nor his art inspiration.

"MOST POPULAR PAINTINGS." Le Sommeil (Sleep), 1937 by Salvador Dali. N.p., n.d. Web. 06 Mar. 2017.
Benford, Susan. "Famous Paintings: Girl Before a Mirror." Famous Paintings in the History of Art. N.p., n.d. Web. 06 Mar. 2017.
"Dream-world-painting-jacek-yerka (10)." Webneel. N.p., n.d. Web. 06 Mar. 2017.
"The Son of Man." Art wiki. N.p., n.d. Web. 06 Mar. 2017.



Reflection and Critique

While making my triptych I found out many strengths and struggles throughout the process. My struggles were first finding an inspiration and ideas on what I want to make my pieces from. This stalled me from starting until later due to me having no idea what I want my piece to be based off. The other thing I then struggled with is the lack of resources I only had so many paints to use at the time making these pieces and I used what I had to create these panels. Another thing I struggled with is my brush technique I am not good at recreating the movement of a clean surrealism. Although I had to say when I did come up with ideas it became a strength of this piece because I think what I was going for were great ways of depicting the prompt with making a piece that has its own charm in them while still relating to my inspiration. Another strength would be my third panel I mean I struggled thinking of an idea for what city in the artist would be for that and sooner than later I found a creative idea to make the piece you see as my third panel. My final piece and my connections and meanings are the strongest components to my triptych because of the good execution I did with comparing the two.

My piece "Living The Life" shares some similarities with my inspirations Dream World Painting- Jacek Yerka, Girl before a Mirror- Pablo Picasso, and Le Sommeil (Sleep), 1937 by Salvador Dali. As you can see in my piece I depict a piece of each of my inspirations that were integrated into these panels. I used the movements surrealism and Modernism to create the style of my piece and how they're viewed. I use the detail and visual perception to emphasize the aspect of distance within each of my pieces in this triptych. I relied mostly on building to depict myself being connected with modern society and the world in general. I used short brush strokes to create the surrealism impression and art style they create. My piece may have sloppier edges and less fine detailed background but the main point is still addressed within my piece.



This is the process of my figurative drawing which I started from the feet making them and everything else on my piece bigger to accommodate the bigger piece of paper given for my figurative drawing.

This was the first time making online are using Photoshop and the first piece I did and I experienced how it was like



The making process of this piece was different then all my other pieces as for the materials used for "Gone With The Sea" are seashells and other uncommon materials used for art



Exploring New Mediums



Before I started carving into my Linoleum piece I drew an outline in pencil of where I would carve out the white parts. I used the small tip carving tool to carve out the bigger white spaces in the body and the background design of the piece. Then I used the fine tip carving tool to carve out the fine details in the hair and background in my piece. The reason why I didn't use the larger tip carving tool is because I didn't want to carve too deep and create a hole through my Linoleum piece. Although when using the smaller tip carving tool I carved multiple times because you don't want a too shallow incision in the Linoleum piece where it won't come up when you print it.



when doing my piece I tried to experiment what would change the outcome of my final piece. For my ephemeral piece when shopping for my fruit I pick many of every fruit I would want to make this piece from. When setting up my basket of fruit I had to many fruit and I was swapping the places of the fruit all over to find a outcome that I would like my final piece to look like liked that part of my planning sketch. I also used different background that would have an effect on how well my basket of fruit would stand out.